

Village Green

AT THE LAKE

ENJOY STUNNING VIEWS OF NEARBY MOUNTAINS AND ROLLING FARM LAND

Visit Our Open House – Friday, Saturday and Sunday 1-5 PM



45 WESLEIGH MANOR • WAYNESBORO, VA 22980 • MLS# 54638 • \$392,000
2,283 sq ft 1st level • 2,310 sq ft unfinished basement • 300 sq ft unfinished bonus room
3 Bedrooms • 2 Baths • 2-car garage • HUGE Unfinished Basement

Open floor plan. Nine foot smooth ceilings, hardwood floors, deep crown molding and chair rails throughout all main areas. Screened-in porch with mountain views. Walk-up bonus room for storage or for future bedroom or bath. Cinnamon-stained cherry front cabinetry in kitchen with a beautiful gold granite countertop. Wet bar and bookcases surround the gas log fireplace. Walk-out basement is perfect to finish and/or use as work shop. Level driveway. Grass cutting and snow removal optional. DIRECTIONS: I-64 to Exit 94. North on Rt. 340. Quick left on Lew Dewitt. Left on Rt.250 and Left on Goose Creek Road. Village Green entrance 1/4 mile on Left.

Beautiful Mountain Views • Walking Trails • Home Owners Association • Optional Grass Cutting • Less than 5 miles to I-81 & I-64

B U I L T B Y


Westhills Co.
BUILDERS
540-942-5857

Homes Designed, Built and Crafted with Pride
by Westhills Co., the Shenandoah Valley's
Premier Homebuilder Since 1970.

www.WesthillsCo.com

M A R K E T E D B Y


Westhills Ltd.
REALTORS®
540-943-9700



Enjoy beautiful mountain views from the screened porch



Living Room - custom cabinetry, bookcase, finishes and wet bar



Pass-through between Dining Room and Kitchen for convenience



Kitchen beautifully appointed with...



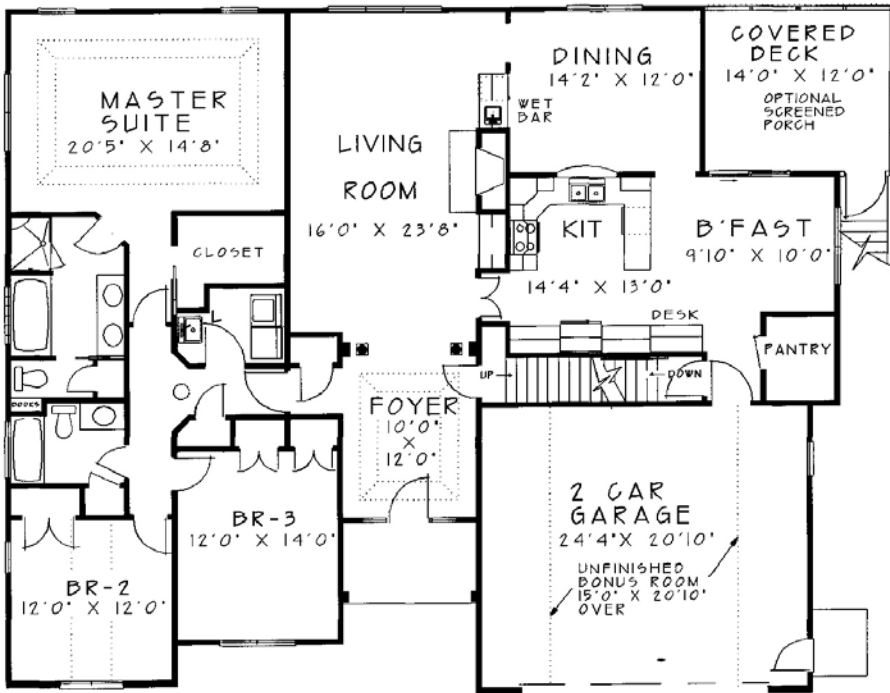
...cherry cabinets and granite countertops!



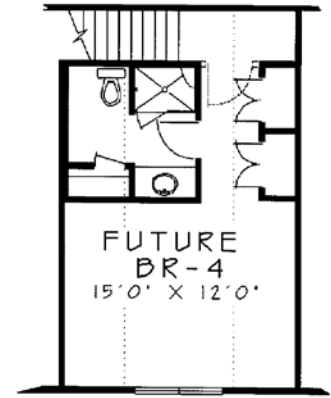
Open floorplan Living Room for easy flow



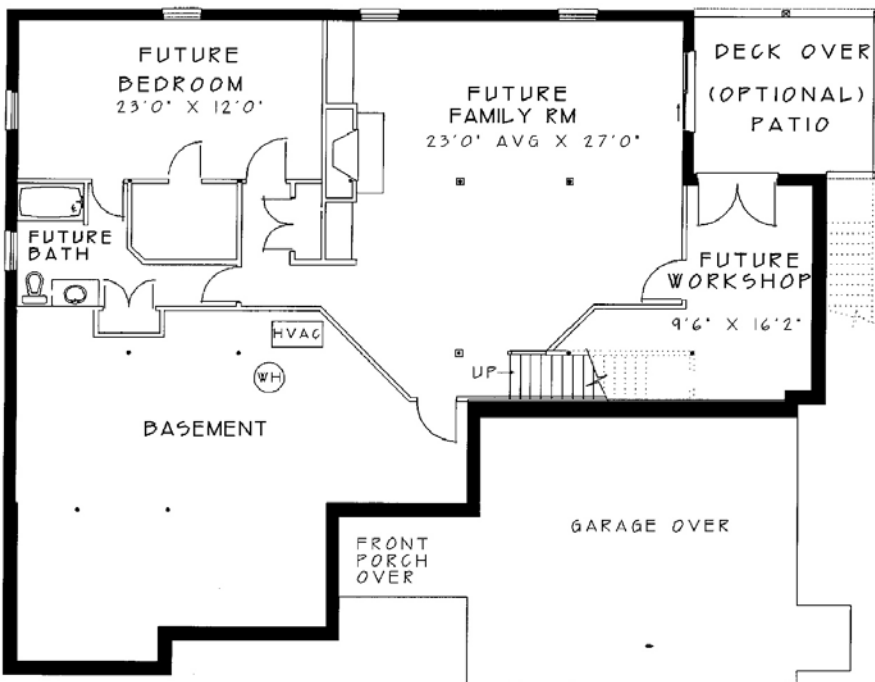
Basement ready to finish – plans available



FIRST FLOOR SQ FT: 2,283



WALK-UP BONUS ROOM
SQ FT (UNF): 300



BASEMENT SQ FT (UNFINISHED): 2,310

PROPERTY ADDRESS
45 WESLEIGH MANOR
WAYNESBORO, VIRGINIA 22980
MLS# 50676



VILLAGE GREEN AT THE LAKE

Village Green at the Lake is a premier residential community of easy-living, high quality homes built by the Shenandoah Valley's most respected homebuilder, Westhills Co. of Waynesboro. Since 1970, Westhills Co. has been recognized for outstanding, architecturally-designed homes and communities.

For a showing or for more information, please call Lesley Hock (540) 487-9170 or Dick Clark (540) 649-2219



www.WesthillsCo.com

Information is deemed reliable, but not guaranteed. Plans subject to change without notice.

